



Stacker

- Dual lead-in carriers with adjustable nose rolls to help stack irregular shaped cartons
- Pneumatic, integrated compression stacker
- Independent speed adjustment in accordance with the carton flow
- Automatic guiding and lateral correction for upper and lower aprons
- Adjustable pressure belt on stacker apron
- Mounted on adjustable wheels
- Optional rear box squaring device
- Optional pneumatic and PLC controlled dual lead in carriers for corrugated material

Delivery Section

The delivery section provides a greater range of carton placement on the stacker apron and the ability to “kick” cartons from either side. Dual lead-in carriers provide optimum stacking control for irregular shaped cartons. The adjustable nose rolls maximize pile depth in the compression section whether understacking or overstacking

- Dual adjustable 2 lower and 2 upper extended delivery carriers with easy adjustment for all kinds of carton styles and sizes
- Breaker rolls
- Belts can be adjusted while the carriers are running
- Kicker / counter
- Electronic regulation system to provide continuous carton flow to the stacker entry

Final Fold Section

- Long final fold to provide easy box flowing
- Drop in center carrier with 24 mm lower and 19 mm upper belts
- Folder belts with independently adjustable speed
- Chromium plated and sliding folding rollers with different angles which can be adjusted at four different positions
- Easily adjustable lower left hand glue pot with 226 mm Ø wheel
- 2 standard changeable brass glue disks available from 2,5 to 13 mm
- Polyamide guides
- Two different sized multi positioned swords
- Pneumatic squaring system for micro flute auto bottom boxes
- Center carrier with sleeping position providing easier set up for small sized boxes (standard on 110, optional on 130-145)

Optional Servo Back Folding System for 4 & 6 Corners

The Servo Back Fold System with single finger provides consistent and uninterrupted 4 & 6 corner back fold function and allows folding of all types of boxes within the machine range automatically by making all the adjustments for the operator after the operator simply inputs the flap length. The touch screen input pad enables the operator to make changes to all parameters allowing for different board grains, thicknesses and types. Each job is saved in electronic value memory for future orders.

- 2 sets (6 pcs) of different sized, wooden (rock maple), folding shoes
- Polyamide guides on final fold section for 4 corner with lid
- Sliding end rolls on both sides of machine on final fold for 4 corner boxes with lid and special carton styles
- Located on PF1 and PF2 sections

Auto Bottom Unit

- 3 sets (12 pieces) of shoes in different sizes
- 6 pieces of folding hook assemblies
- Various sized hooks
- Located on PF1 and PF2

Pre-Fold Sections (PF1+PF2)

- 3 full length lower carriers and 3 upper carriers on each section
- Pre-break of the first creasing line up to 180°
- Pre-break of the third creasing line up to 135°
- Third score belt 30 mm
- Left and right hand glue flap breakers
- High speed third score opener

Feeder

- Motor vibrating feed pile support for separating blanks and eliminating skips and doubles
- 2 different sized pile supports
- Dual diamond tipped feed gates adjustable in four directions, providing precise control on all blanks
- Hopper sides independently adjustable in four directions
- Modular feed carriers with individual belt tightening
- Easily adjusted rack style blank support for longer cartons
- Optional vacuum system on 3 center belts

Optional Double Sided Register Section (Blank Aligner)

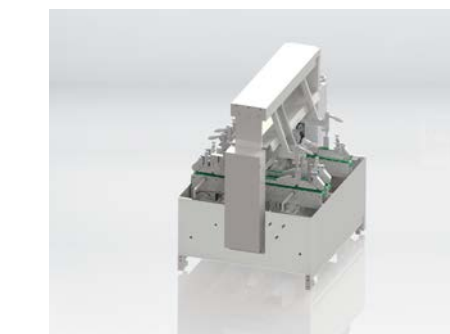
The modular Side Register Section squares cartons prior to entering the folding section, giving additional control over blanks.

- Double sided alignment with full width of the machine
- Minimum registering flaps (40 mm) on 110 (60 mm) on 130, 145
- Easily adjusted to various material thickness
- 2 sets of extra carriers with 2 lower (24 mm), 2 upper (19 mm) belts
- Section Length: 1.000 mm on 110 1.650 mm on 130-145

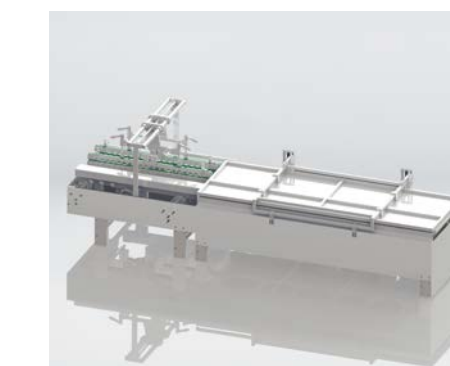
Related Products Omega Allpro 110-130-145



Omega Pre-Feeder is an independent machine for continuous and high-speed blank feeding for cardboard and corrugated material into folder gluers. The Pre-Feeder has a wide range of models; 55-90-110-145, works in synchronization with the main line.



Omega Nick Breaker is a specialty device which allows for high-speed and efficient folding and gluing process of special design blanks such as beverage multi-pack cartons with nicks. It is a servo driven module which can be integrated on all Omega Allpro folder gluers in 70-145 cm width range.



Omega Turnpro is a separate module which turns the direction of the carton flow by 90 degrees on the folder gluer and is a significant value-add feature. It is developed for producing specific cartons, such as multi-pack beverage carriers, confectionary, e-commerce and cosmetics boxes for high speed production in a single pass.

Omega Turnpro can be incorporated on all Omega Allpro folder gluers in the 90-145 cm width range. The machines with Turnpro can produce all standard carton styles like straight-line, auto-bottom, double wall, 4 & 6 corners in addition to the special carton styles they are designed for.



Omega Pack is a fully automated case packer to complement the high-speed carton production on Omega folder gluers. Omega Pack can pack up to 4 rows and 4 layers, requires a single operator and takes 10-15 minutes to make ready. It handles straightline

and 4 & 6 corner work as well as many others in its working range, can pack on crease lines or end flaps which provides for superior stacking strength. It is an independent machine that can be integrated to all folder gluers.