



MULTIFUNCTIONAL SHEET LABEL CUTTER

DTS

Die cut, half cut, crease, perforate.

PRODUCT PROFILE

The VICUT sheet label cutter DTS is designed for multiple functions including cutting and creasing. With dual tools, it can easily make full cutting, kiss cutting, creasing and plotting. The unique air suction paper feeding method, suitable for wider range of materials, including self-adhesive, paper cards, films and so on. It is the ideal machine for reliable and automatic production of labels and small packaging boxes, great choice of copy shops, product labeling, office applications and many others.

APPLICATION

Material

photo paper, T-shirt transfer paper, stickers, glossy paper, transparent Films, paper cards, etc.

Field

DTS integrates the functions of kiss cutting, die cutting and creasing. It is widely used for proofing and small batch production of labels, tags, packaging boxes, processing of advertising signs and paper art, etc.

TECHNICAL PARAMETERS

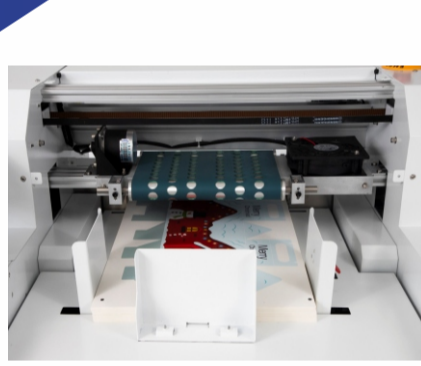
MODEL	Multifunctional Sheet Label Cutter DTS
Max. Cutting size	A3+ (483mmx330mm)
Tool type	Blades, creasing tool, pen
Paper feeding method	Top suction feeding system
Positioning method	High resolution CCD camera
Scanning code type	dot mark/QR code
Scan marks speed	5-10s
Maxi. cutting speed	960mm/s
Maxi. force	Creasing tool: 0-750gf(3gf Step) Cutting tool: 0-750gf(3gf Step)
Mechanical resolution	0.2mm
Die cutting precision	0.1mm(duplicate)
Min. Label size	5mmx5mm
Max.feeder capacity	1000sheets (200gsm)
Max. material thickness	350gsm
Cutting control system	XY- High-power brush-less servo motor
Control panel	5 inch touch screen +physical buttons
Data transfer method	USB
OS Compatible	Windows7,8,10
Software	Dedicated cutting server (equipped with CDR and AI plugin)
Power	350w
Working voltage	100VAC-120VAC,50/60Hz,Maximum current 6.8A 200VAC-240VAC,50/60Hz,Maximum current 3.4A
Operation environment	Temperature +5°C to +35 °C (Fahrenheit 41 -95) Humidity 30% -75% (Non-condensing)
Machine dimension	L 787mmx W 740mmx H 1320mm
Package dimension	L 970mmx W 970mmx H 880mm
Machine weight(N.W/G.W)	114kg/146kg

DETAILS DESCRIPTION



Dual tools

Integrated cutting blade and creasing tool, which makes paper feeding smoothly during cutting and creasing for card paper.



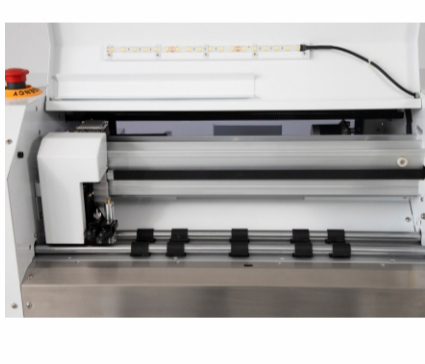
Top suction feeding system

The DTS utilizes an advanced top suction feeding system and high capacity feed tray, capable of holding 1000 sheets, minimizing downtime and maximizing efficiency. This feeding mode can be compatible with more types of materials.



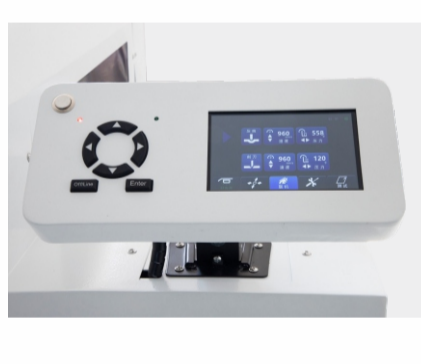
Concealed drawer type large capacity paper collection tray

Movable exit paper tray with sheets adapter, suitable for containing different size paper. It can be concealed inside of machine body, convenient for transportation. Large volume which can hold up to 1000pcs sheets depends on the thickness of materials.



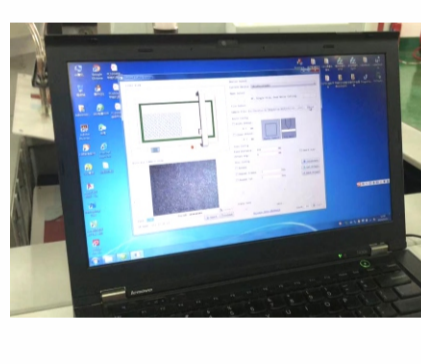
Double Press Roller

DTS equipped with double press rollers, which makes paper feeding smoothly during cutting and creasing for card paper.



User friendly touch screen panel and physical buttons

The combination of physical keys and touch screen makes the operation more convenient.



Easy-to-use software

A dedicated stand-alone cutting software is offered together with DTS. Operators use Coreldraw or AI design software to create printing and cutting files, input it to the cutting software and generate to PLT file, and then send to DTS.

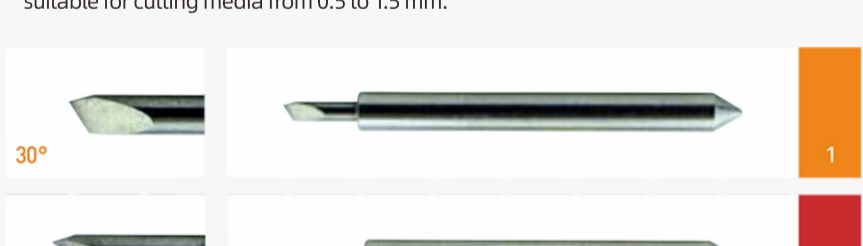
ACCESSORIES & TOOLS

Cutting Blade

These ultra-sharp and hard-wearing blades comes in two types and three blades angles. Either as a pack of three the same or as a mixed pack.

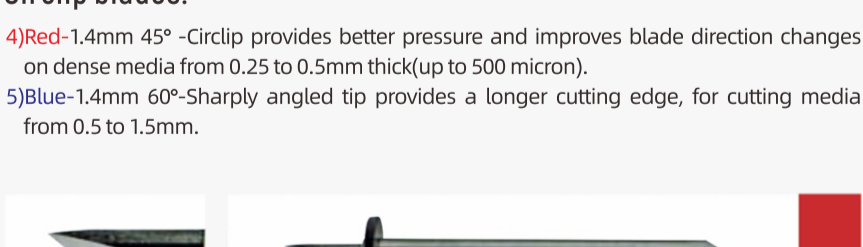
Blades:

- 1)Yellow-1mm 30°- for film,very soft material, thin label material.
- 2)Red-1mm 45°- for adhesive stickers, thin paper/card under 0.25mm.
- 3)Blue-1mm 60°- for thick media. Sharply angled tip provides a longer cutting edge-- suitable for cutting media from 0.5 to 1.5 mm.



Circlip blades:

- 4)Red-1.4mm 45° -Circlip provides better pressure and improves blade direction changes on dense media from 0.25 to 0.5mm thick(up to 500 micron).
- 5)Blue-1.4mm 60°-Sharply angled tip provides a longer cutting edge, for cutting media from 0.5 to 1.5mm.



Blade holder

This precision engineered components sits in the dual tool head and holds the cutting blade of choice. The tool is manually adjustable to obtain the desired amount of "blade out" for the job in hand.



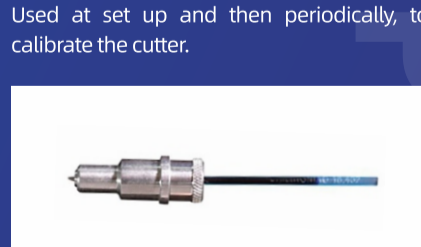
Creasing Tool

This tool is double-ended, offering a choice of tips for either wide or narrow creases. It creases all fold lines with its ball-bearing head, thus avoiding the exposure of paper fibers through printed areas.



Calibration tool

Used at set up and then periodically, to calibrate the cutter.



SAMPLE DISPLAY

